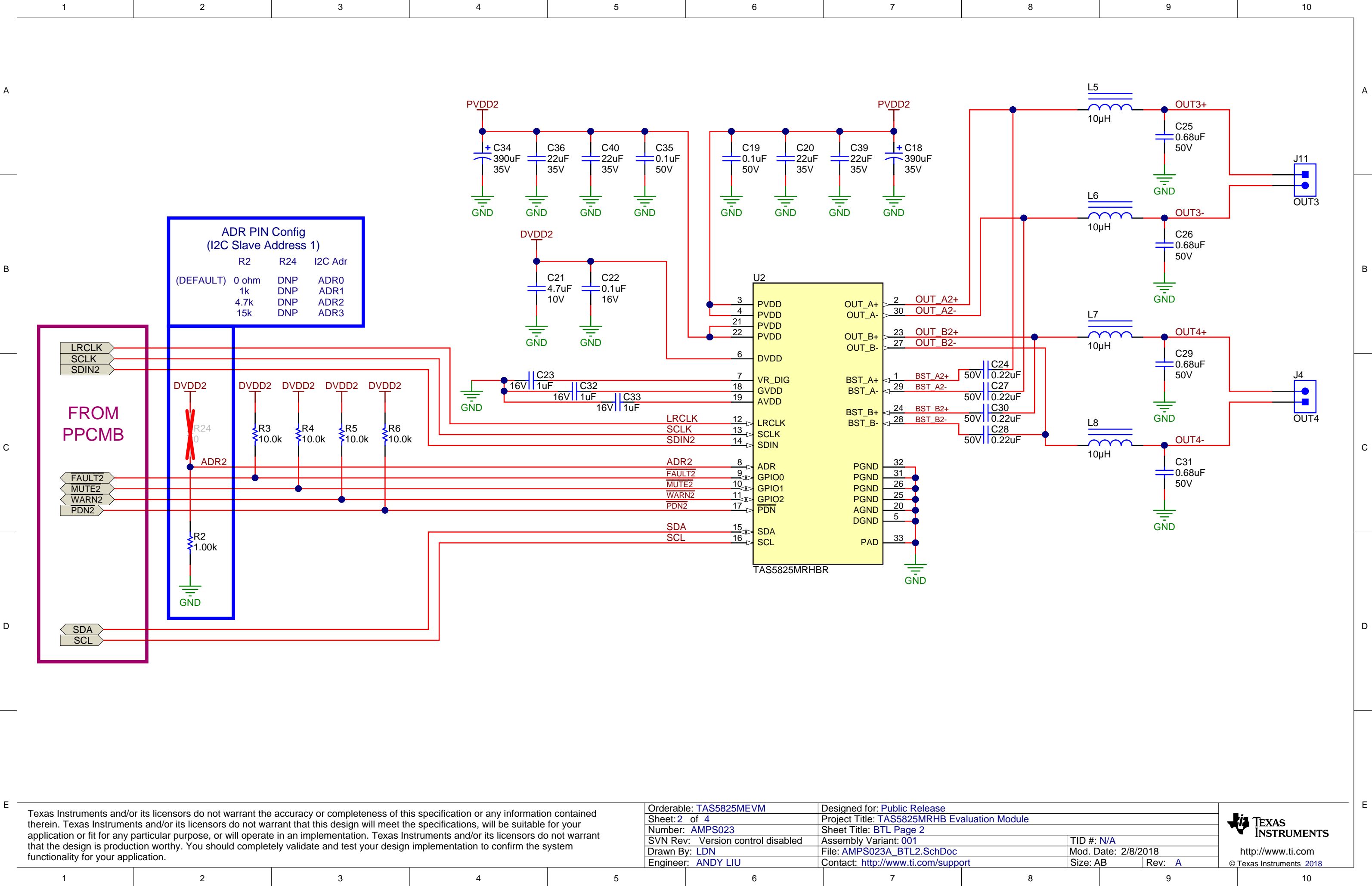


Texas Instruments and/or its licensors do not warrant the accuracy or completeness of this specification or any information contained therein. Texas Instruments and/or its licensors do not warrant that this design will meet the specifications, will be suitable for your application or fit for any particular purpose, or will operate in an implementation. Texas Instruments and/or its licensors do not warrant that the design is production worthy. You should completely validate and test your design implementation to confirm the system functionality for your application.

Orderable: [TAS5825MEVM](#)  
Sheet: 1 of 4  
Number: [AMPS023](#)  
SVN Rev: Version control disabled  
Drawn By: [LDN](#)  
Engineer: [ANDY LIU](#)

Designed for: [Public Release](#)  
Project Title: [TAS5825MRHB Evaluation Module](#)  
Sheet Title: [BTL Page 1](#)  
Assembly Variant: [001](#)  
File: [AMPS023A\\_BTL1.SchDoc](#)  
Contact: <http://www.ti.com/support>

TID #: [N/A](#)  
Mod. Date: [2/8/2018](#)  
Size: [AB](#)  
Rev: [A](#)



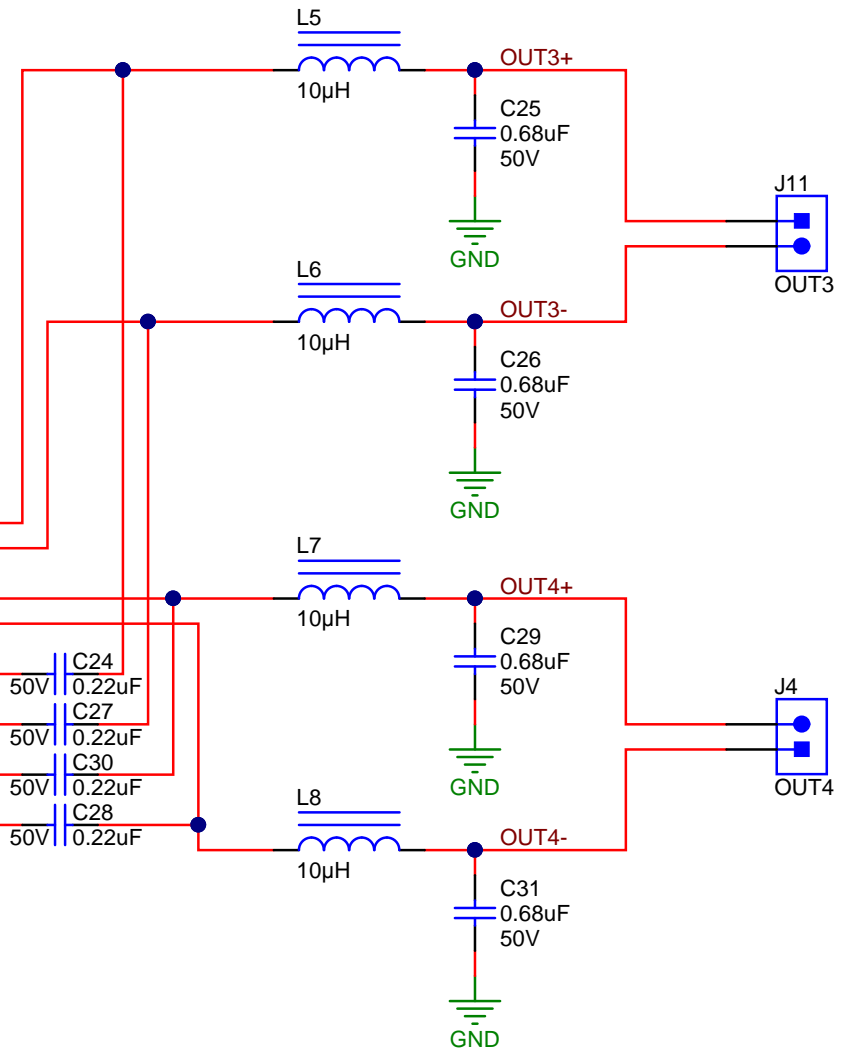
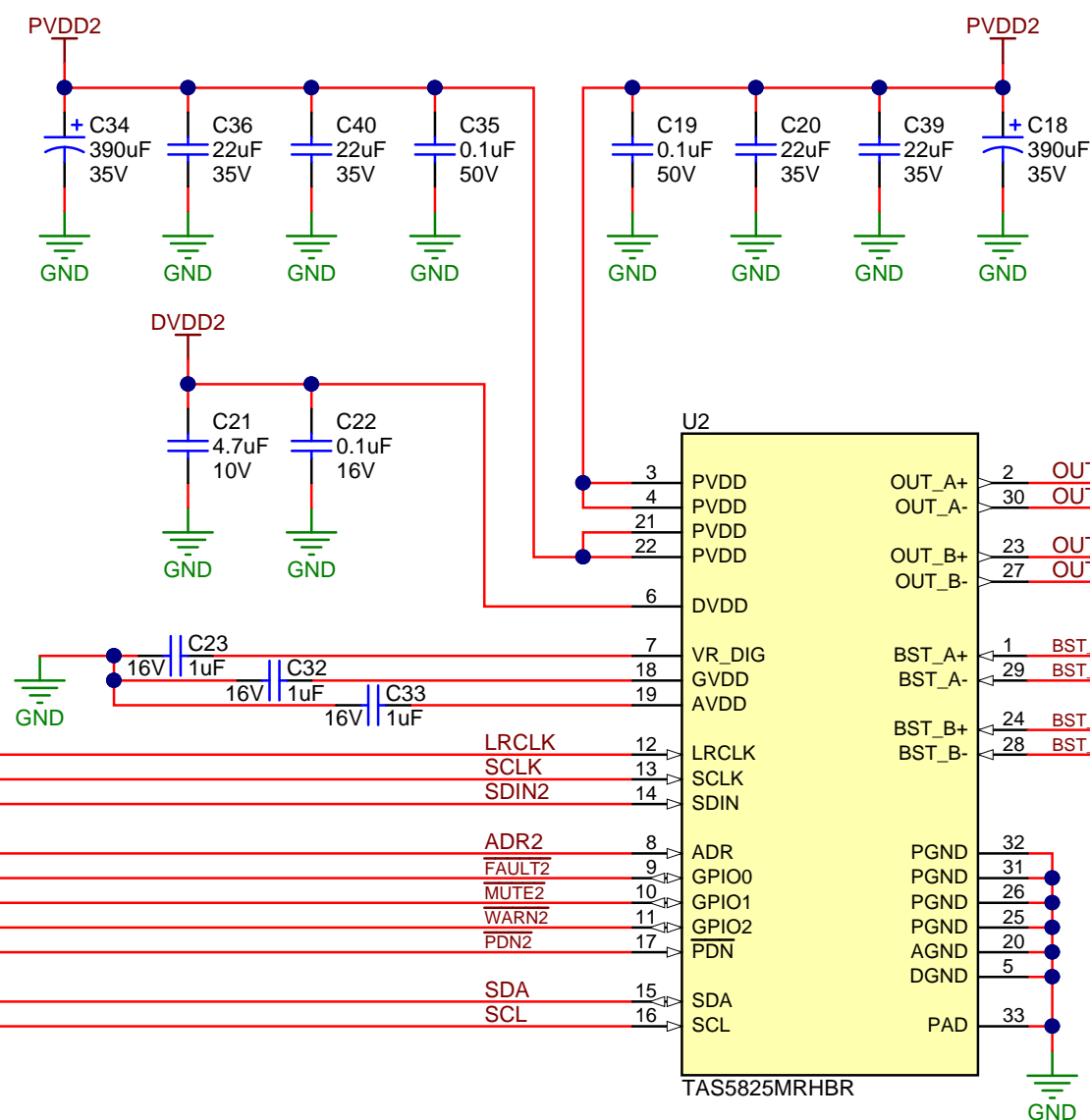
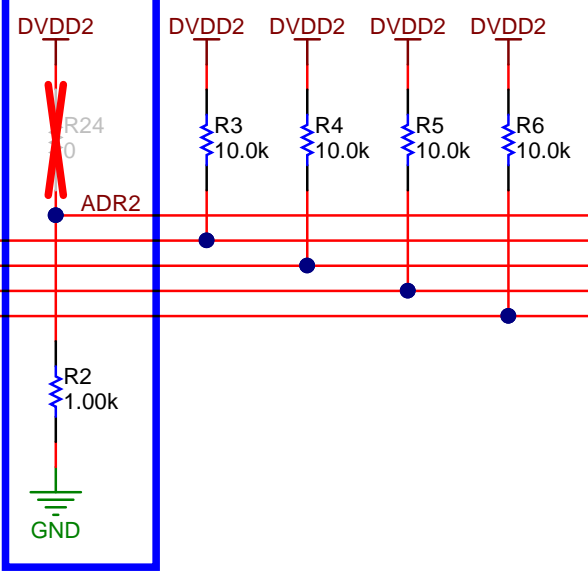
ADR PIN Config (I2C Slave Address 1)			
	R2	R24	I2C Adr
(DEFAULT)	0 ohm	DNP	ADR0
	1k	DNP	ADR1
	4.7k	DNP	ADR2
	15k	DNP	ADR3

LRCLK  
SCLK  
SDIN2

FROM  
PPCMB

FAULT2  
MUTE2  
WARN2  
PDN2

SDA  
SCL



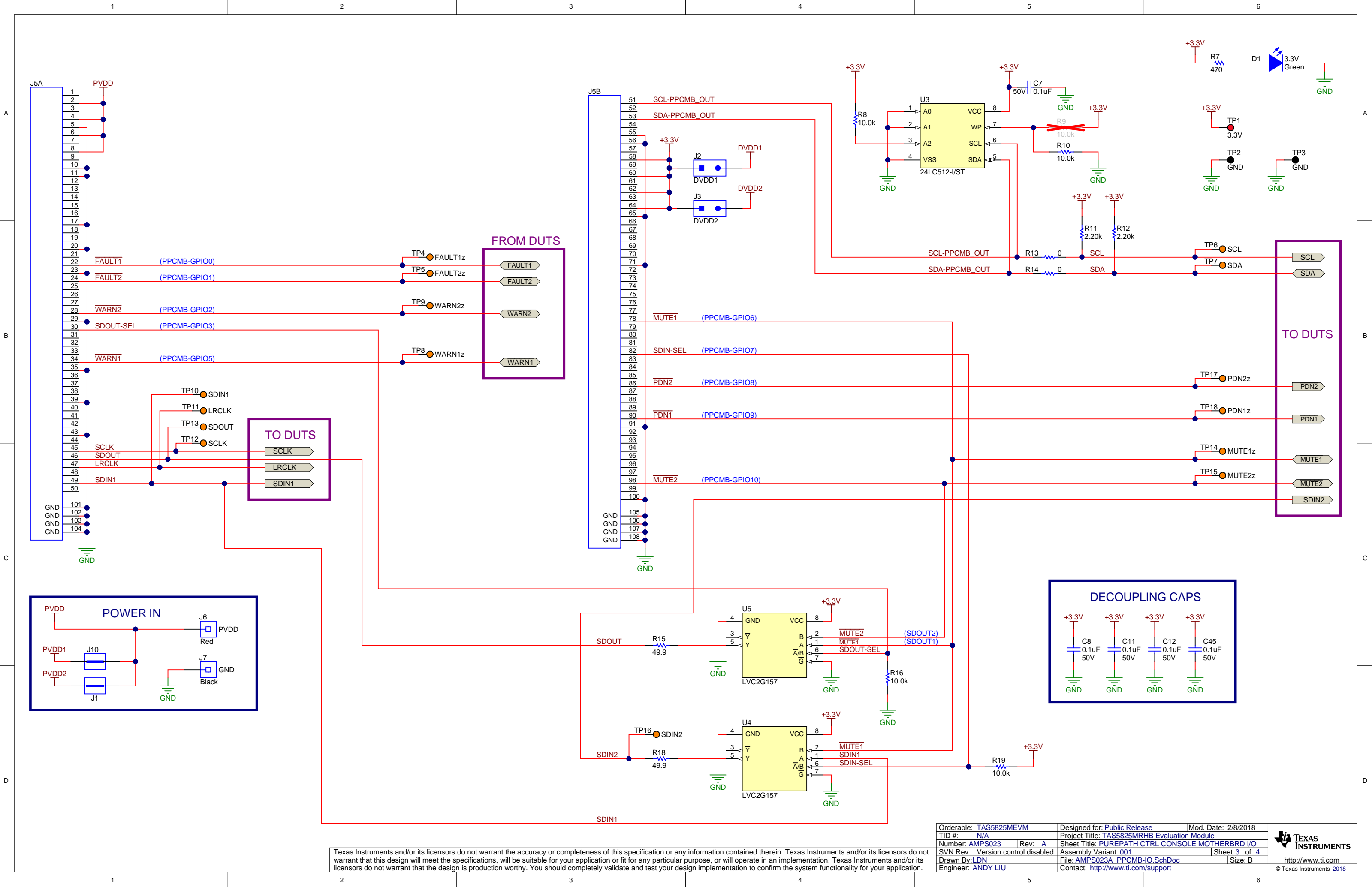
Texas Instruments and/or its licensors do not warrant the accuracy or completeness of this specification or any information contained therein. Texas Instruments and/or its licensors do not warrant that this design will meet the specifications, will be suitable for your application or fit for any particular purpose, or will operate in an implementation. Texas Instruments and/or its licensors do not warrant that the design is production worthy. You should completely validate and test your design implementation to confirm the system functionality for your application.

Orderable: [TAS5825MEVM](#)  
Sheet: 2 of 4  
Number: [AMPS023](#)  
SVN Rev: Version control disabled  
Drawn By: [LDN](#)  
Engineer: [ANDY LIU](#)

Designed for: [Public Release](#)  
Project Title: [TAS5825MRHB Evaluation Module](#)  
Sheet Title: [BTL Page 2](#)  
Assembly Variant: [001](#)  
File: [AMPS023A\\_BTL2.SchDoc](#)  
Contact: <http://www.ti.com/support>

TID #: [N/A](#)  
Mod. Date: [2/8/2018](#)  
Size: [AB](#)  
Rev: [A](#)





Texas Instruments and/or its licensors do not warrant the accuracy or completeness of this specification or any information contained therein. Texas Instruments and/or its licensors do not warrant that this design will meet the specifications, will be suitable for your application or fit for any particular purpose, or will operate in an implementation. Texas Instruments and/or its licensors do not warrant that the design is production worthy. You should completely validate and test your design implementation to confirm the system functionality for your application.

Orderable: TAS5825MEVM	Designed for: Public Release	Mod. Date: 2/8/2018
TID #: N/A	Project Title: TAS5825MRHB Evaluation Module	
Number: AMPS023	Rev: A	Sheet Title: PUREPATH CTRL CONSOLE MOTHERBRD I/O
SVN Rev: Version control disabled	Assembly Variant: 001	Sheet: 3 of 4
Drawn By: LDN	File: AMPS023A_PPCMB-IO.SchDoc	Size: B
Engineer: ANDY LIU	Contact: <a href="http://www.ti.com/support">http://www.ti.com/support</a>	

Texas Instruments and/or its licensors do not warrant the accuracy or completeness of this specification or any information contained therein. Texas Instruments and/or its licensors do not warrant that this design will meet the specifications, will be suitable for your application or fit for any particular purpose, or will operate in an implementation. Texas Instruments and/or its licensors do not warrant that the design is production worthy. You should completely validate and test your design implementation to confirm the system functionality for your application.

Orderable: TAS5825MEVM

TID #: N/A

Number: AMPS023

SVN Rev: Version control disabled

Drawn By: LDN

Engineer: ANDY LIU

Designed for: Public Release

Project Title: TAS5825MRHB Evaluation Module

Sheet Title: Hardware

Assembly Variant: 001

File: AMPS023A\_EVM\_Hardware.SchDoc

Contact: http://www.ti.com/support

Mod. Date: 2/6/2018

Sheet: 4 of 4

Size: Letter

TEXAS  
INSTRUMENTS

http://www.ti.com

© Texas Instruments 2018

1

2

3

4